

PURTABOI ISLAND

MUGGY MUGGY BEACH

MOUNT KOTALOO

THE SAND SPIT

BRAMMO BAY

JETTY

AIRSTRIP

PRIVATE PROPERTY

ISLAND CIRCUIT

PALM VALLEY

DUNK ISLAND (COONANGLEBAH)

MUNG UM GNACKUM ISLAND

KUMBOOLA ISLAND

COCONUT BEACH

COCONUT BAY



To access walking trails follow the beach to entry signs



- National Park
- Private Property
- Dunk Island Spit (Council Lease)
- Reef
- Toilet
- Campgrounds
- Dunk Island Restaurant

- Swimming
- Snorkelling
- Hiking and Bushwalking
- Recommended Location for Water Sport Activity
- Lookout



# WALKING TRAILS

Important note: Trails may become inaccessible during high tides (above 2.5m). Please check tides before setting out, or speak with a Dunk Island team member for advice.

## MUGGY MUGGY BEACH WALK Easy

This walk will take you from The Spit to Muggy Muggy through Bramo Bay Beach. Aboriginal for 'coral mushrooms where crayfish lurk' and boasting 360 million-year-old rocks which are mounted into vertical folds, Muggy Muggy Beach is the perfect short rainforest walk and a great place to enjoy a picnic lunch on the beach. The track runs parallel to the water leading to the beach located behind a rainforest-clad headland - this pleasant walk will delight you with coastal views and dense rainforest. Access may be affected by tidal influences at certain times.



3km | 70 mins from jetty  
Access via northern beachfront of Brammo Bay

## MOUNT KOTALOO CIRCUIT Moderate

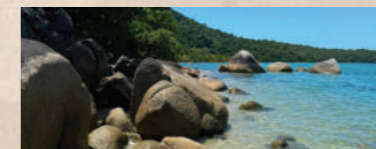
You will find the start of this track through the dense rainforest past the old resort. This steep track takes you all the way up through the rainforest to the 271m summit, Mt Kotaloo lookout. This lookout offers breathtaking views over the Family Islands and nearby mainland. Access may be affected by tidal influences at certain times.



7km | 3 hrs from jetty  
Access via northern beachfront of Brammo Bay

## COCONUT BEACH WALK Moderate

This track goes around rocky outcrops and boulders before reaching Coconut Beach which is made up of small alcoves fringed by the magnificent Calophyllum tree, more commonly known as Cyclone trees. These grow as high as 20 metres, have very low-lying foliage and can be hundreds of years old. Access may be affected by tidal influences at certain times.



7.5km | 2.5 hrs from jetty  
Access via eastern beachfront of Pallon Beach

## ISLAND CIRCUIT Moderate

Climb Mt Kotaloo before descending into the magical Palm Valley and then onto Coconut Beach. Not for the faint hearted, this challenging walk will introduce you to Dunk Island's lush green rainforest and scenic views. Access may be affected by tidal influences at certain times.



11km | 4 hrs from jetty  
Access via northern beachfront of Brammo Bay or Eastern beachfront of Pallon Beach

# NATURE SPOTTING

Most of Dunk Island is designated as National Park and is protected for future generations to enjoy. The dense rainforest is home to a huge variety of native flora and fauna, including 150 species of birds and the breathtaking blue Ulysses butterfly. See how many of these you can spot during your walk:

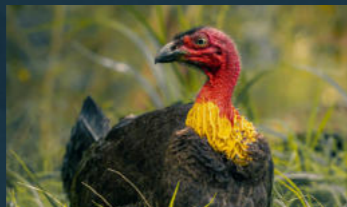


## BANFIELDS

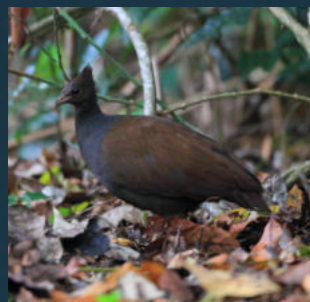
A cute critter that looks a little like a large mouse. The real identity of this native Australian mammal is a 'Fawn Footed Melomy.' They are territorial animals and can be quite resourceful.

## BRUSH TURKEYS

A large black bird with a bare red neck and head, the Brush Turkey is a large black bird with a bare red neck and head. They are commonly found on the forest floor



throughout the rainforest, and their call is quite distinctive. You will easily find their nests throughout the trails which are built by the males and can reach 1.5m in height. The Brush Turkey has a unique 'thermometer' in their beaks which helps them to know if their eggs are being kept warm. Prior to rainfall or when the temperature of the eggs requires, you will often discover them 'topping up' or adjusting their nests with more leaves.

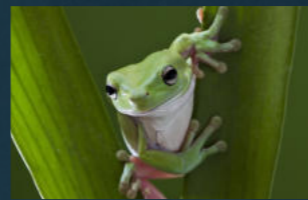
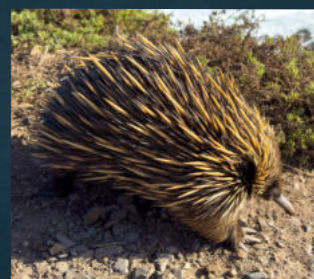


## ORANGE-FOOTED SCRUBFOWL

Meet the cheeky Orange-footed Scrubfowl is a common sight on Dunk Island - often seen darting off dramatically into the undergrowth, as if caught red-handed in some secret mission they would rather not explain.

## ECHIDNAS

One of the island's friendliest mammals, the Echidnas will venture out at night for a feeding frenzy on ants and other creepy crawlies. They have protective spines to ward off predators while it digs for ants with its snout and long sticky tongue.



## FROGS

The 'Green Tree Frog' plays a critical role in controlling the insect population and is one of the cutest and most harmless creatures on Dunk island.

## GECKOS

The Gecko is a small friendly lizard that helps control insect populations. They are totally harmless - in fact their presence is said to bring good luck! Campers may hear them chirping or clicking, or see them scurrying along the walls.

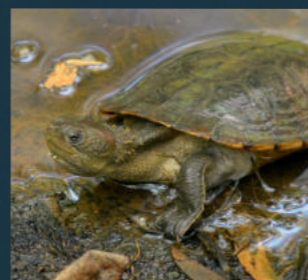
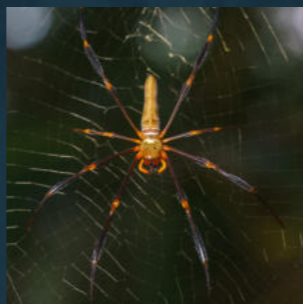


## SNAKES

Dunk Island is blessed with some beautiful snakes and although widely considered to be reptiles to fear, our snakes are quite graceful and captivating. Our most common snakes, Pythons and Tree Snakes, are harmless though may bite if threatened or frightened so please always keep your distance when encountering a snake - they will typically slither away from any human presence.

## SPIDERS

Spiders also help to control our insect populations and are harmless if left undisturbed. They are prone to moving in accordance with weather changes. The Golden Orb spider is the most beautiful on the island - it can grow to the size of an adult hand and weaves a magnificent web.



## TURTLES

Saw-shelled turtles (*Myuchelys latisternum*) can often be found in the freshwater streams and ponds of Dunk Island, where they play an important role in the ecosystem as opportunistic feeders that help keep water bodies clean.

## TERNS

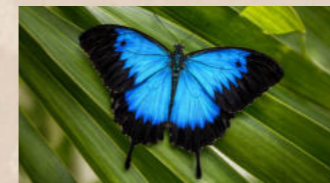
Terns are often seen gliding above the shoreline or resting quietly on the sand, and during nesting season (October to March) we kindly ask visitors to report any sightings of tern eggs or nesting activity on the beach to island staff so we can take appropriate steps to protect these vulnerable seabirds.



## BUTTERFLIES

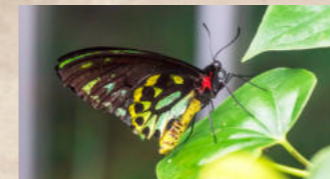
Come wet season, Dunk Island transforms into a butterfly haven. With over 60 species recorded, it's not unusual to see clouds of delicate wings fluttering through the rainforest and around the beach tracks.

## LOOK OUT FOR...



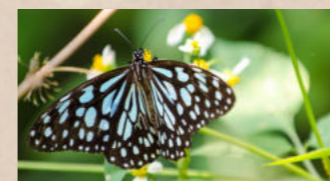
### THE ICONIC ULYSSES

Electric blue and utterly mesmerising, it's a true symbol of Tropical North Queensland.



### THE CAIRNS BIRDWING BUTTERFLY

Australia's largest butterfly, with vivid green and black wings (males) and golden yellow undersides (females).



### BLUE TIGER BUTTERFLY

Often seen in large groups along forest edges.

## SPOTTED SOMETHING WILD? SNAP & SAVE!

We love seeing Dunk Island through your lens. If you've captured a stunning butterfly, a cheeky scrubfowl, or even a soaring osprey we want to see it!

- 📁 Send your wildlife photos to [info@dunkisland.com](mailto:info@dunkisland.com)
- 📍 Include your name and date of visit
- ✉ We'll send you a \$20 voucher to spend at the Dunk Island Restaurant - on us!

Terms and conditions apply.

## DID YOU KNOW...

Although Dunk Island is located on the Cassowary Coast, there are no cassowaries on the island.

Dunk Island is located in 'Far North Queensland Croc Country', and while it's highly unlikely you'll ever encounter a crocodile on Dunk, we ask all guests to be Crocwise. This means never venture off designated pathways, especially around mangroves, freshwater creeks and swampy areas. Report any sightings to island staff immediately.

Queensland Parks & Wildlife and the Cassowary Coast Regional Council maintain the Dunk Island walking trails. If you encounter trail damage, please take a photo and send it to [info@dunkisland.com](mailto:info@dunkisland.com) so Dunk Island staff can alert the authorities.

## WATCH OUT FOR...



This harmless looking plant can really catch walkers off guard. This vine-like climbing palm features sharp hooks that snag the clothing of walkers, giving rise to the name "wait-a-while".

## THIS PRECIOUS ISLAND

Protected for future generations, Dunk Island's waters and beaches are classified as a Marine Park, while the land itself is a National Park. This means that all the flora and fauna is protected, and we ask you to refrain from approaching or touching any wildlife. It's also important that you do not feed any wildlife as foreign foods can cause illness and alter the animal's behaviour causing a dependency upon humans for survival.

During your walks around the island, please help us preserve the natural environment by keeping to the walking tracks.

Please refrain from collecting memorabilia from nature including shells and coral (whether dead or alive) as they are important to the formation of our beaches. Ensure you bring all your litter back to the campground for disposal.

🌐 [DUNKISLAND.COM](http://DUNKISLAND.COM) 📷 [EXPLOREDUNKISLAND](https://www.instagram.com/exploredunkisland) 📱 [DUNK ISLAND](https://www.facebook.com/dunkisland)

Take nothing  
but photos

Leave nothing  
but footprints



NO DOGS  
ON DUNK



All visitors to Dunk Island acknowledge and accept the visitor terms and conditions available at [dunkisland.com/general-terms/](http://dunkisland.com/general-terms/)